

| | |
|--------------------------------|-----------------|
| Croissant Sandwich | 7.95 |
| Choice of any one item: | |
| Tuna Salad (albacore white) | Turkey Breast |
| Chicken Salad (all white meat) | Cold Roast Beef |
| Ham and Swiss cheese | BLT |
| Half Croissant Sandwich | 6.95 |
| Hamburger (1/3 lb.) | 6.45 |
| Double Cheeseburger | 7.95 |
| Bacon Cheeseburger | 7.95 |
| Ortega Cheeseburger | 7.75 |
| Chili Cheeseburger | 7.75 |
| Sauteed Mushroom Burger | 7.95 |
| California Burger | 8.95 |
| BBQ Santa Fe Burger | 8.45 |
| Diet Plate | 8.95 |

Mexican Fare

| | | | |
|-------------------------|----------------------|--------------|--------------|
| Fajitas | beef or chicken 9.95 | shrimp 12.95 | |
| Mexican Combo . | 1 item 6.95 | 2 items 8.95 | 3 items 9.95 |
| Burrito Especial | 8.95 | | |
| Authentic Burrito | 8.95 | | |
| Tacos Baja Style | fish or shrimp | 10.95 | |

Drinks

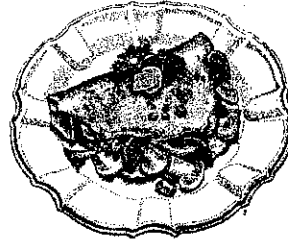
| | small | large |
|--|-------|-------|
| Cappuccino, Caffe Latte, Caffe Mocha | 3.95 | |
| Hot Chocolate (Refills 60 cents) | 1.95 | |
| House Coffee or Decaf | 1.95 | |
| Hot Tea or Herb Tea | 1.95 | |
| Apple Juice | 1.95 | 2.95 |
| Orange Juice | 1.95 | 2.95 |
| Grapefruit Juice | 1.95 | 2.95 |
| Cranberry Juice | 1.95 | 2.95 |
| Tomato | 1.95 | 2.95 |
| Ice Tea (Free Refills) | 1.95 | |
| Lemonade | 1.95 | |
| Soft Drinks (Free refills) | 1.85 | |
| Root Beer or Coke Float | 2.95 | |
| Milk or Chocolate Milk | 2.45 | |
| Fruit Smoothies | 3.95 | |
| Strawberry, Pineapple, Melon, Mango, Banana, Blueberry or any two combinations. All Blended with ice and yogurt. | | |

Try our Friday Night Dinner Specials!

| | |
|---|------|
| Frozen Iced Punch | 2.95 |
| Strawberry, Pineapple, Melon, Mango, Banana, Blueberry or any two combinations. All Blended with ice. | |
| Frozen Iced Mocha | 3.25 |
| Frozen Iced Cappuccino | 2.95 |
| Old Fashioned Shake | 3.65 |

Desserts

| | |
|--|------------|
| Apple Pie | 3.95 |
| Pie (a La Mode) | 4.95 |
| Ernesto's Bread Pudding (a La Mode) | 4.95 |
| Dish of Ice Cream | 2.25 |
| Ice Cream Sundae small 1.95 | large 3.95 |
| Small Sundae has one scoop of ice cream, Large Sundae has two. Topped with chocolate sauce, whipped cream, nuts and a cherry | |



Join us on Saturday and Sunday for our weekend omelette bar!



Let us cater or host your next special event!



Daytime To-Go Menu
7:00am to 4:00pm

975 No. Michillinda Ave.
Pasadena, CA
(626) 351-0388

MasterCard, Visa, American Express
Call for large group reservations

Salads

Salads served with zucchini, carrot, banana nut, blueberry or cornbread

| | |
|-------------------------------|------|
| House Salad | 7.95 |
| Chicken Salad | 8.25 |
| Taco Salad | 8.95 |
| Tuna Salad | 8.95 |
| Spinach Salad | 8.95 |
| Cobb Salad | 8.95 |
| Caesar Salad | 6.45 |
| With Grilled Chicken | 8.95 |
| With Black Tiger Shrimp | 9.95 |
| Fresh Fruit Salad | 7.95 |
| Pasta Salad | 6.95 |
| With Grilled Chicken | 8.95 |
| With Black Tiger Shrimp | 9.95 |
| Green Garden Salad | 5.95 |
| Chinese Chicken Salad | 8.95 |
| BBQ Chicken Salad | 8.95 |
| Smoked Salmon Salad | 9.95 |
| Chef's Salad | 8.95 |

Soup

Cup 2.95 Bowl 4.95

Vegetarian

| | |
|------------------|------|
| Veggie Burrito | 7.45 |
| Evergreen Melt | 7.95 |
| Garden Burger | 7.45 |
| Oriental Delight | 7.95 |
| The Vegetarian | 7.95 |

Pasta

Pasta dishes served with garlic bread

| | |
|---|----------|
| Garlic, basil, olive oil, parmesan cheese | 7.95 |
| Angel Hair Pasta - Tomato, Basil | 7.95 |
| With Charbroiled Chicken Breast | Add 2.00 |
| With Black Tiger Shrimp | Add 3.00 |
| Linguini Pasta Pesto - Garlic Basil, Olive Oil, Pine Nuts, Parmesan Cheese | 7.95 |
| With Charbroiled Chicken Breast | Add 2.00 |
| With Black Tiger Shrimp | Add 3.00 |
| Oriental Stir Fry Vegetables | 7.95 |
| With Charbroiled Chicken Breast | Add 2.00 |
| With Black Tiger Shrimp | Add 3.00 |
| Spaghetti with Meat Sauce | 7.95 |
| With Veal or Chicken & Swiss Cheese | Add 2.50 |
| Chicken Fettucine Pasta | 9.95 |

Breakfast

Most items served with your choice of potatoes and toast. Egg beaters or egg whites, add \$1.00. Fresh fruit for potatoes, add 1.25

| | |
|---|---------------------------|
| Bacon (4) or Sausage (4) & Eggs | 7.95 |
| Veggie Patty or Sausage Patty & Eggs | 8.25 |
| Polish or Italian Sausage & Eggs | 8.25 |
| Turkey Sausage (4) or Turkey Bacon (4) & eggs | 8.25 |
| USDA Ground Chuck Beef Patty (1/3lb.) & Eggs | 8.25 |
| Corned Beef Hash & Eggs | 8.25 |
| Smoked Ham Steak & Eggs | 8.25 |
| Country Breakfast | 8.25 |
| Two Eggs (any style) | 5.95 |
| Pork Chop & Eggs (10 oz. French Cut) | 11.95 |
| Lox with Bagel | 9.95 |
| Chicken Fried Steak & Eggs, Biscuits & Gravy | 8.95 |
| Herbal Chicken Breast & Eggs | 9.95 |
| Top Sirloin Steak (8 oz) & Eggs | 12.95 |
| USDA Choice Ribeye Steak (12 oz) & Eggs | 16.95 |
| USDA Choice New York Steak (8 oz) & Eggs | 12.95 |
| Steak Benedict | 9.95 |
| Eggs Florentine | 8.95 |
| Eggs Benedict | 8.95 |
| Smoked Salmon Benedict | 9.95 |
| Egg Croissant | 8.25 |
| Breakfast Burrito | 8.25 |
| Old Cafe Skillet | 8.95 |
| Fresco's Skillet | 9.95 |
| Two Vegetarian Egg Crepes | 8.95 |
| Banana & Strawberry Crepes | 8.95 |
| Monte Cristo | 8.95 |
| Asparagus, Mushroom Scramble | 8.25 |
| Lox Scramble | 9.95 |
| Diced Smoked Honey Cured Ham | 8.25 |
| Chorizo Scramble | 8.25 |
| Spinach Saute | 8.25 |
| | Short Stack (2) Stack (3) |
| Buttermilk Pancakes | 3.95 4.95 |
| Seven Grain Granola Pancakes | 5.95 6.95 |
| Strawberry or Blueberry Pancakes | 5.45 6.95 |
| French Toast | 4.95 5.55 |
| Pancake Combo | 7.95 |
| Seven Grain Granola Pancake Combo | 9.95 |
| Blueberry Pancake Combo | 9.95 |
| Cinnamon Roll French Toast | 5.95 |
| Cinnamon Roll French Toast Combo | 8.95 |

| | |
|----------------------------------|------|
| French Toast Combo | 8.95 |
| Belgian Waffle | 5.95 |
| Banana Nut Belgian Waffle | 6.95 |
| Belgian Waffle Combo | 8.95 |
| Cheese Omelette | 7.95 |
| Mushroom Omelette | 7.95 |
| Carnitas Omelette | 8.95 |
| Mexican Omelette | 8.95 |
| Pesto Omelette | 8.95 |
| Polish Sausage Omelette | 9.95 |
| Hawaiian Omelette | 8.95 |
| Ground Beef Omelette | 8.95 |
| Vegetable Omelette | 7.95 |
| Ortega Peppers & Cheese Omelette | 7.95 |
| California Omelette | 8.50 |
| Ham & Cheese Omelette | 8.50 |
| Denver Omelette | 8.50 |
| Cheese N' Chili Beans Omelette | 8.50 |
| Fresh Spinach Omelette | 8.50 |
| Smoked Salmon Omelette | 9.95 |

Sandwiches

Served with pasta salad, cole slaw, french fries or red potato salad.
Substitute soup, green salad or fruit, add 1.25

| | |
|---------------------------------|--------------------|
| Turkey Avocado Sandwich | 8.25 |
| Tahoe Turkey Sandwich | 8.25 |
| New York Steak Sandwich (12 oz) | 12.95 |
| Teriyaki Chicken Sandwich | 8.95 |
| Turkey Wheat Wrap | 8.95 |
| Santa Fe Style Chicken Sandwich | 8.95 |
| French Dip | 8.25 |
| Beefeater | 8.25 |
| Beef Brisket Sandwich | 9.95 |
| Country Style Hot Dog | 8.95 |
| Club Sandwich | 8.25 |
| Rich's Hamburger Club Sandwich | 9.95 |
| Turkey Melt | 8.25 |
| Albacore Tuna Melt | 8.95 |
| Rueben Sandwich | 8.25 |
| Chili Size | 7.95 |
| Patty Melt | 7.95 |
| Fish Sandwich | 9.95 |
| Grilled Ham & Cheese Sandwich | 6.95 |
| Grilled Cheese Sandwich | 5.45 |
| | With tomatoes 6.45 |